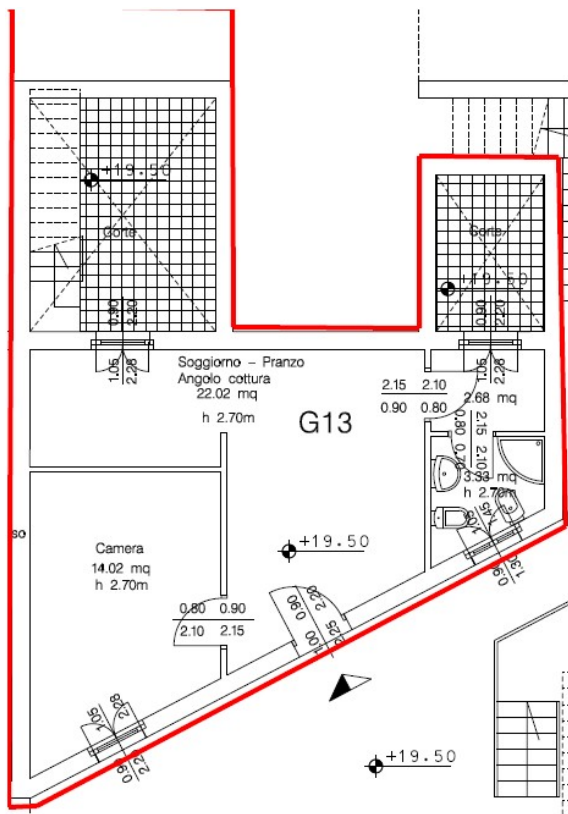


With a surface area of approx. 52.28 sq.mts., this apartment is arranged as follows : Leading off from the entrance hall, kitchen/dining room, small office room, bedroom and bathroom with windows and/or french doors. The apartment has two courtyards and garden (total surface area of 30.00 sq.mts circa) for sole use. It also has air conditioning and an independent heating system. In the basement each apartment has an 18sq mt parking space for exclusive use.



Garden: YES
 Courtyard: YES (2)
 Private parking space: . YES

Use of common services: YES
 - Terraced Solarium & Pool
 - Gym
 - Launderette
 - Reception desk

Level	Location
3 RD Floor	
2 ND Floor	
1 ST Floor	
Ground Floor	

Entrance / Linving



Garden



Courtyard and garden access

