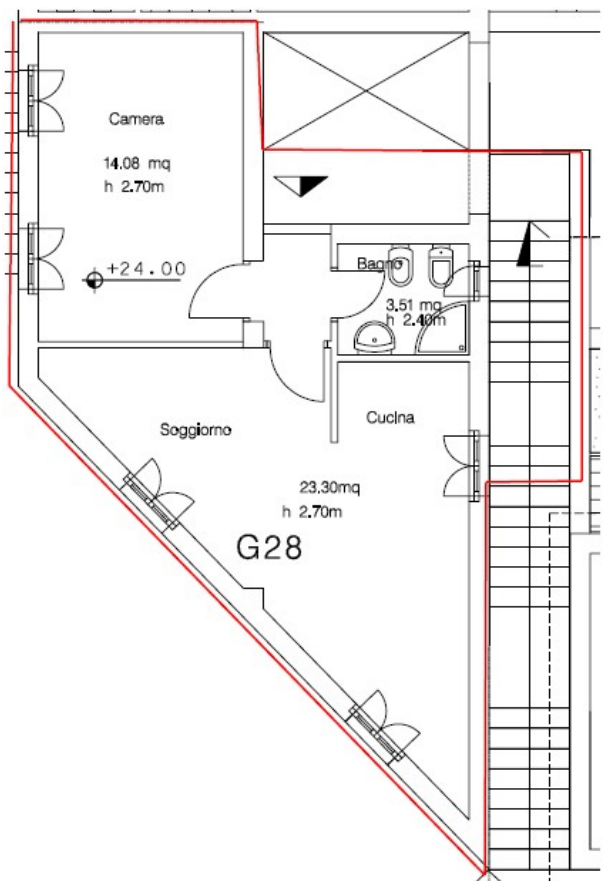


With a surface area of about 52.97 sq.m., is arranged as follow: from the entrance hall you get to the kitchen/dining room, living room, bedroom and bathroom. The apartment has a small entrance-terrace. It also has air conditioning and independent heating system. All rooms have windows and/or French doors. The basement has an 18 sq.m. parking spot.



- Garden: . . . . NO
- Courtyard: . . . . NO
- Private parking space: . YES

- Use of common services: YES
  - Terraced Solarium & Pool
  - Gym
  - Launderette
  - Reception desk

Level	Location
3 <sup>RD</sup> Floor	
2 <sup>ND</sup> Floor	
1 <sup>ST</sup> Floor	
Ground Floor	

Living



French door



Bathroom

