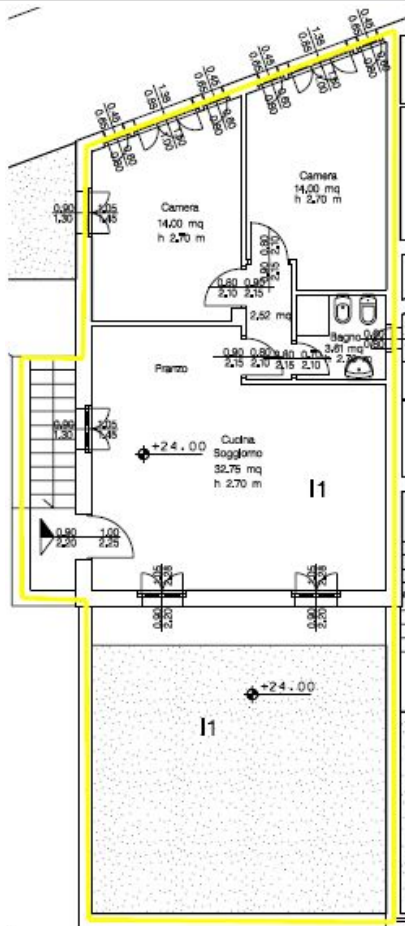


With a surface of sq. mt. 78,63 circa, the apartment is compound of: main access by external private staircase, living room/kitchen, 2 double bedrooms, 1 bathroom. The unit has wide private garden directly linked to the living room. AC and heating systemen included. Under-ground floor, included in the price, 1 cellar of sq. mt. 7,27 and 1 private car spot of sq. mt. 12.50, placed in the communal covered garage.



- Garden: . . . . YES
- Court: . . . . NO
- Private car space: . . YES
- Private cellar/storage: . YES

- Common services: . . YES
- Swimming pool (in terrace)
- Gym room
- Launderette
- Reception desk

Level	Location
3rd Floor	
2nd Floor	
1st Floor	
Ground Floor	

