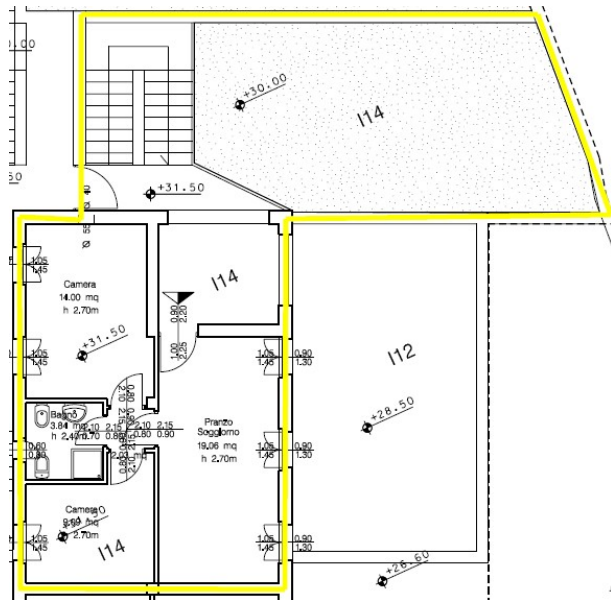


With a surface of sq. mt. 57.00 circa, the apartment is compound of: main access at second floor under covered lodge, living room/kitchen, 2 bedrooms, 1 bathroom. The unit has a large private garden directly linked to the main access. AC and heating systemen included. Under-ground floor, included in the price, 1 cellar of sq. mt. 4,84 and 1 private car spot of sq. mt. 12.50, placed in the communal covered garage.



- Garden: YES
- Court: YES
- Private car space: . . YES
- Private cellar/storage: . YES

- Common services: . . YES
- Swimming pool (in terrace)
- Gym room
- Laundrette
- Reception desk

- | Level | Location |
|------------------|----------|
| 3rd Floor | |
| 2nd Floor | |
| 1st Floor | |
| Ground Floor | |

