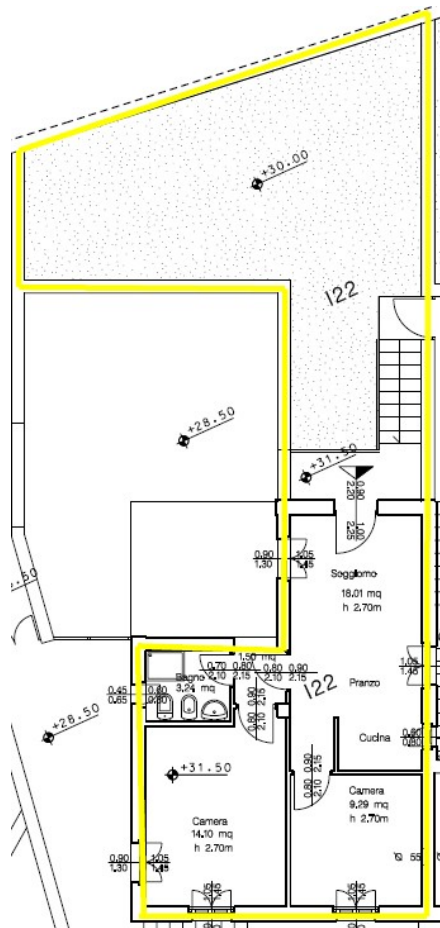


With a surface of sq. mt. 57.00 circa, the apartment is compound of: main access at second floor (private ramp), living room/kitchen, 2 bedrooms, 1 bathroom. The unit has private garden directly directly linked to the main access. AC and heating systemen included. Under-ground floor, included in the price, 1 cellar of sq. mt. 4,84 and 1 private car spot of sq. mt. 12.50, placed in the communal covered garage.



Garden: YES
 Court: NO
 Private car space: . . YES
 Private cellar/storage: . YES

Common services: . . YES
 - Swimming pool (in terrace)
 - Gym room
 - Launderette
 - Reception desk

Level	Location
3rd Floor	
2nd Floor	
1st Floor	
Ground Floor	

