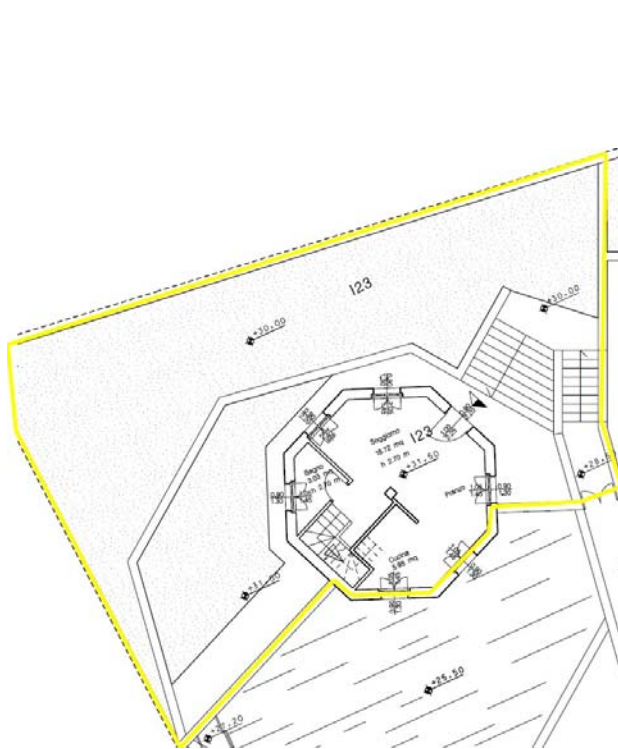



With a surface of sq. mt. 81.00 circa, the apartment is on 2 floors and compound: main access (private ramp), living room/kitchen, 2 bedrooms, 2 bathrooms. The unit has wide private garden directly linked to the main access and living room. AC and heating systemen included. Underground floor, included in the price, 1 cellar of sq. mt. 4,84 and 1 private car spot of sq. mt. 12.50, placed in the communal covered garage.



- Garden: YES
- Court: NO
- Private car space: . . YES
- Private cellar/storage: . YES

- Common services: . . YES
 - Swimming pool (in terrace)
 - Gym room
 - Laundrette
 - Reception desk

Level	Location
3rd Floor	
2nd Floor	
1st Floor	
Ground Floor	

