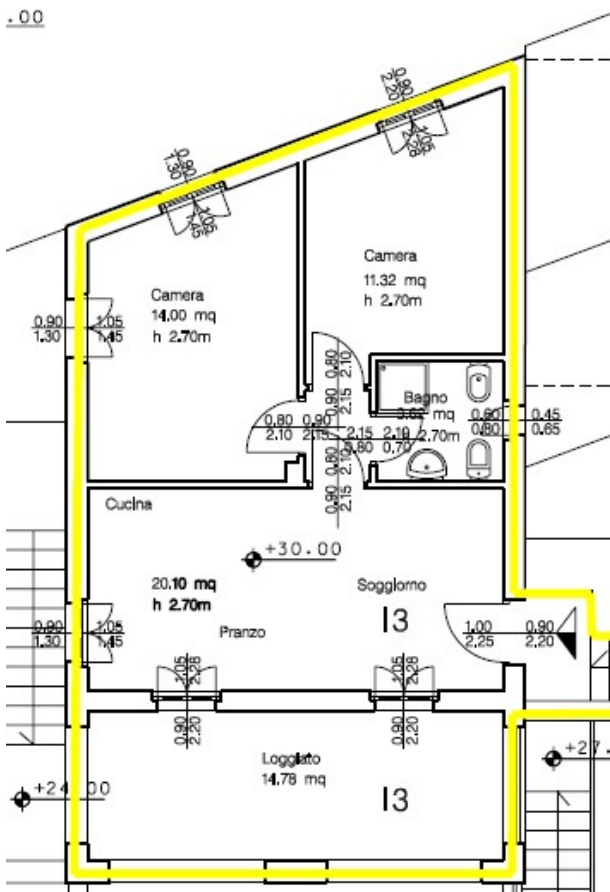


With a surface of sq. mt. 61,15 circa, the apartment is compound of: main access by external private staircase, living room/kitchen, 2 double bedrooms, 1 bathroom. The unit has wide private garden directly linked to the main access. AC and heating systemen included. Under-ground floor, included in the price, 1 cellar of sq. mt. 4,84 and 1 private car spot of sq. mt. 12.50, placed in the communal covered garage.



- Garden: NO
- Court: YES
- Private car space: . . YES
- Private cellar/storage: . YES

- Common services: . . YES
- Swimming pool (in terrace)
- Gym room
- Laundrette
- Reception desk

Level	Location
3rd Floor	
2nd Floor	
1st Floor	
Ground Floor	

