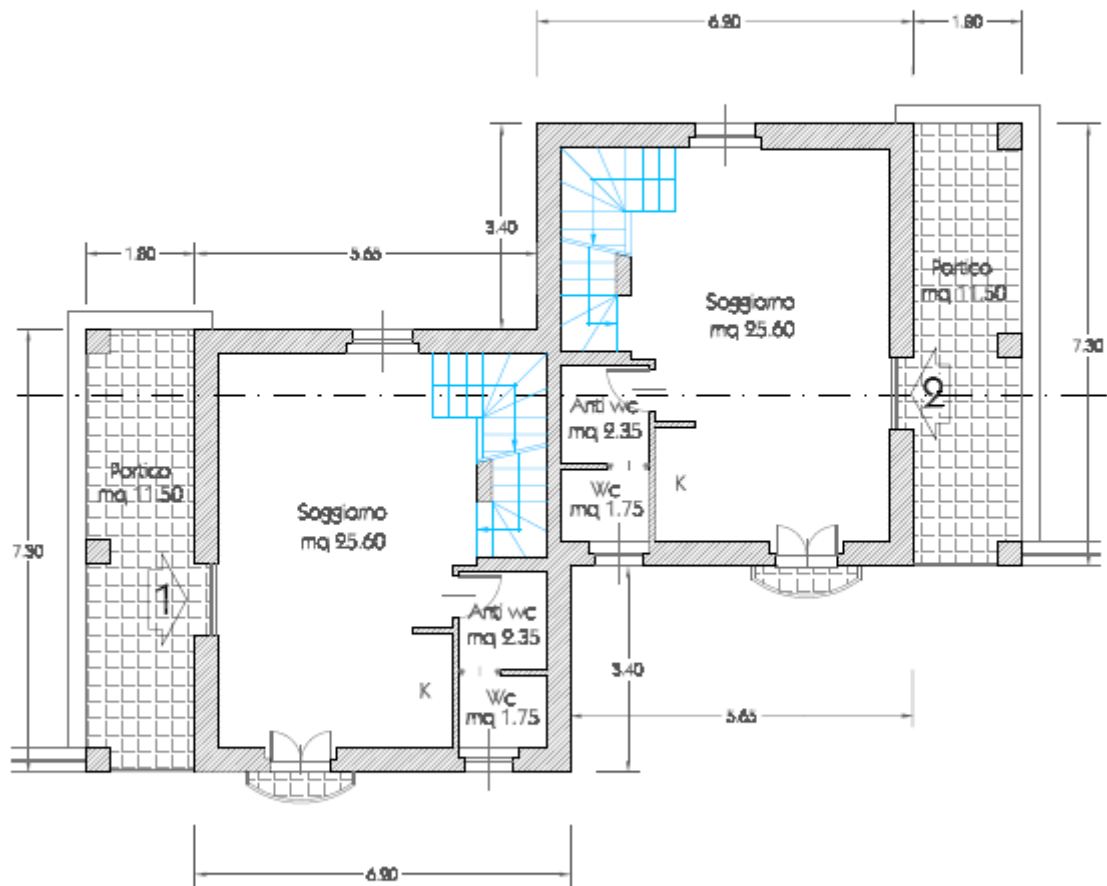


The small hamlet of Villa a Sesta, just out of the medieval village of San Gusmè, is the true natural frame of this small complex made from 6 villas, perfectly located into the Chianti's wide green area in direction of Siena. The units, of about 140mq., are semi-detached 3 floors with wide outsides (gardens / courtyards). The basement is a liveable room directly connected to the front garden. 1 bathroom at this stage. The ground floor has the main house access directly from the master garden (under terrace), and it is located the living room and kitchen with 1 bathroom. At first floor, 2 double bedrooms and 1 bathroom- There is a shared common swimmin pool. The complex is located into the ideal place for whom looking for the link with nature (made of woods, olives and cypress trees) without the feeling to be alone. Villa a Sesta is walkaway distance and with just 5 minutes by car the village of San Gusme'. Just out of this, on the same way, we meet Castelnuovo Berardenga where are based all the main services to live: banks, restaurants, pharmacy, post office, sports, etc. Siena is 25 min away by car.

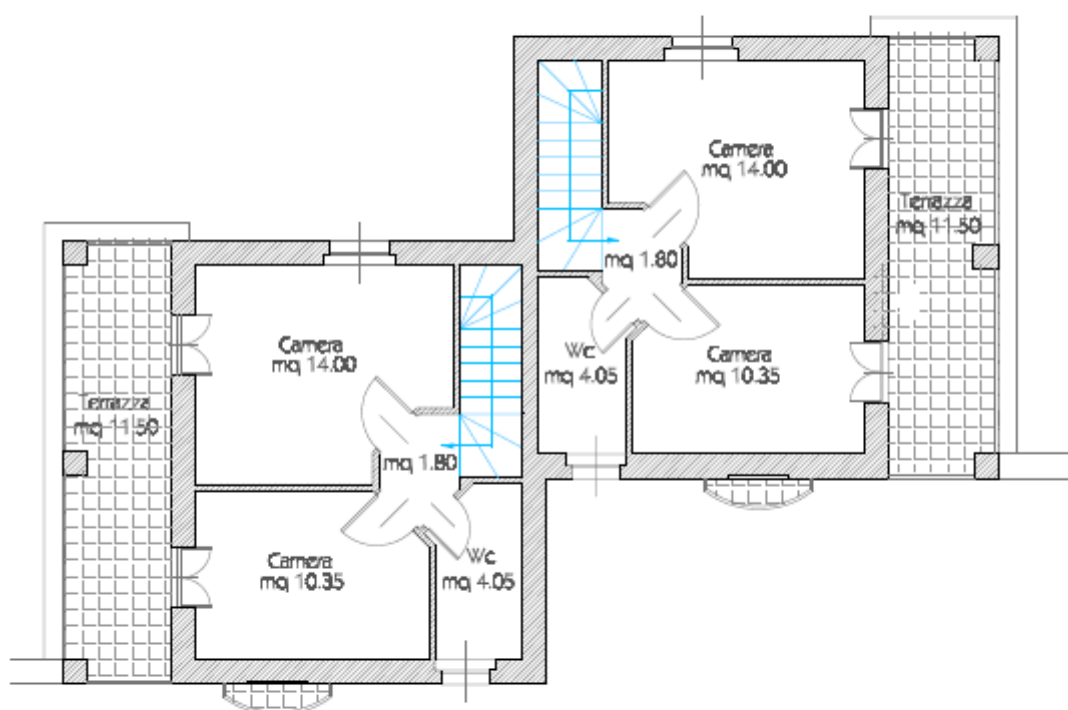


BLOCCO "A"



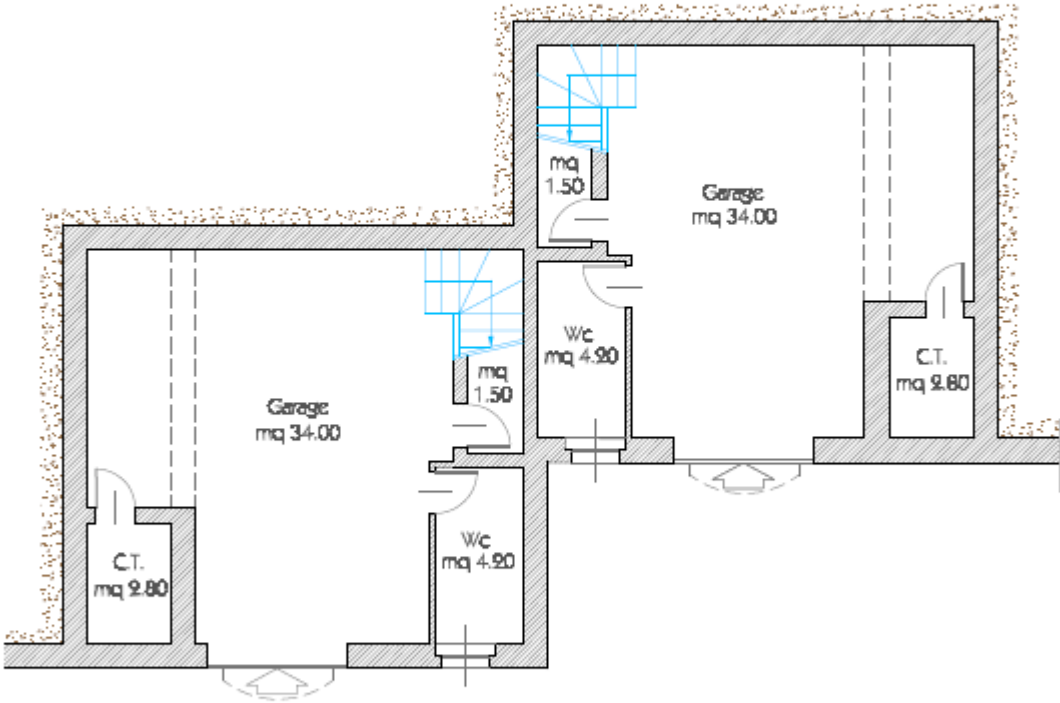
PIANO TERRENO

BLOCCO "A"

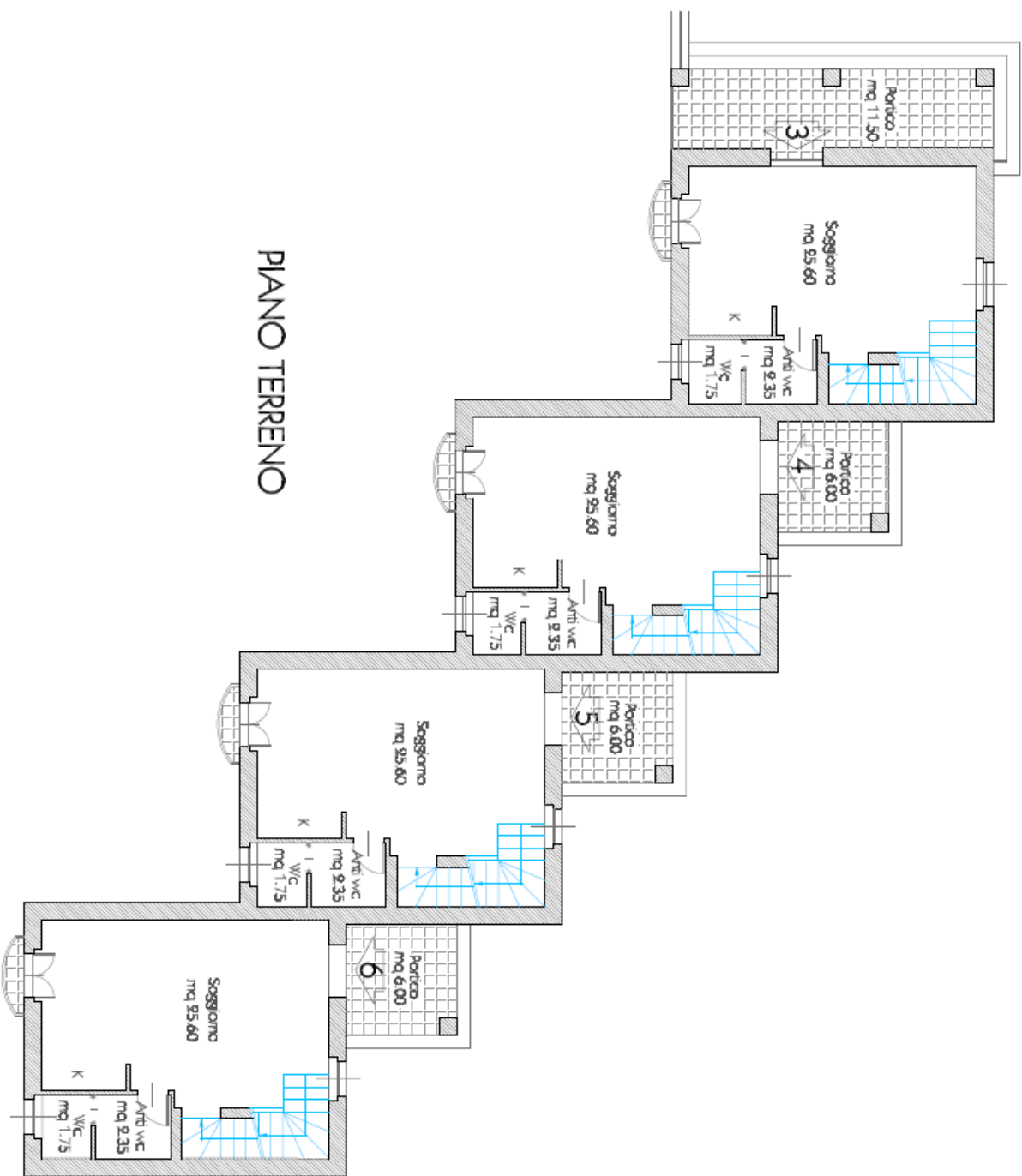


PIANO PRIMO

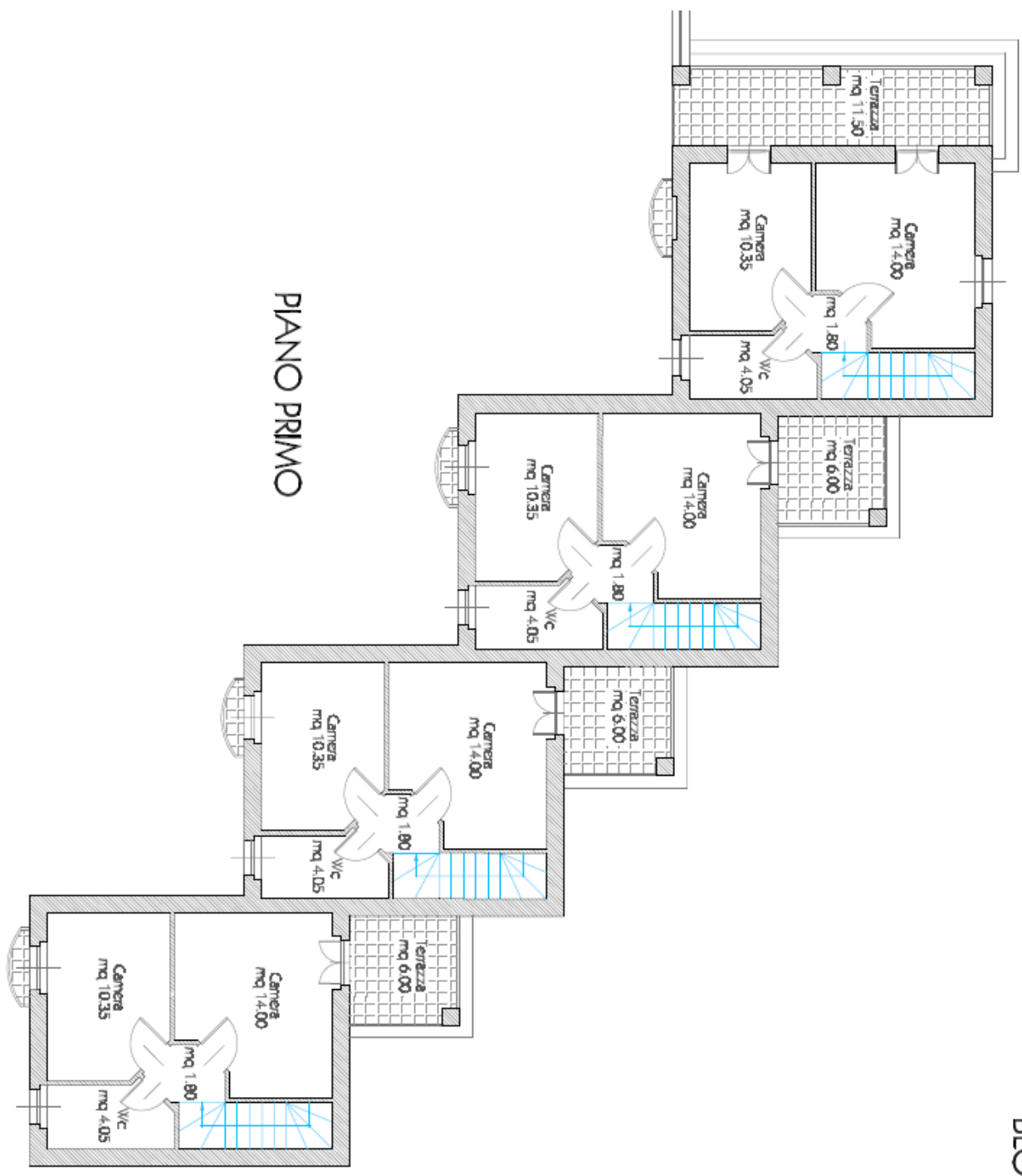
BLOCCO "A"



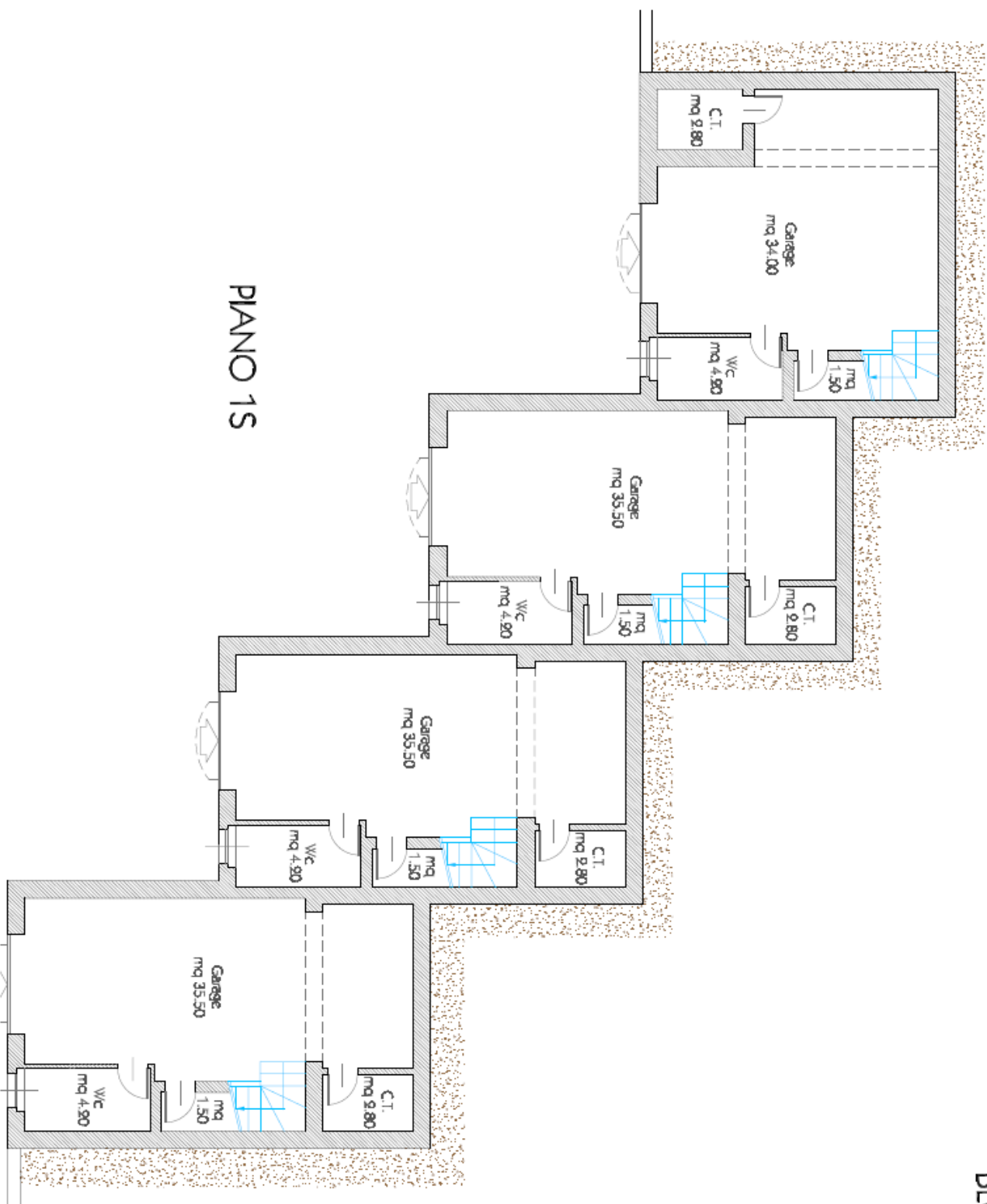
PIANO 1S



PIANO TERRENO



PIANO PRIMO



PIANO 1S













